



Biology

General Instructions

- Working time – 3 hours
- Board-approved calculators may be used
- Write using blue or black pen
- Draw diagrams using pencil
- Write your Candidate Number at the top of each page of Part B

Section I Pages 2 - 20

Total marks: 75

This section has two parts, Part A and Part B

Part A

Total marks: 15

- Attempt Questions 1 to 15
- Allow about 25 minutes for this Part

Part B

Total marks: 60

- Attempt Questions 16 to 28
- Allow about 1 hour 45 minutes for this Part

Section II Pages 21 - 23

Total marks: 25

- Attempt ONE Question from Option Questions
- Allow about 45 minutes for this Section

CHECKLIST

Each boy should have the following:

1 Question Paper	
1 Multiple-choice Answer Sheet	
1 4-page Writing Booklet	

Part A**Total marks: 15****Attempt Questions 1 to 15****Allow about 25 minutes for this Part**

Use the multiple-choice Answer Sheet supplied.

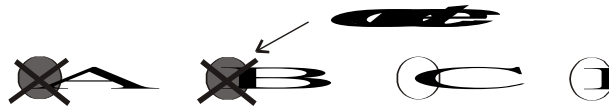
Select the alternative A, B, C or D that best answers the question. Fill in the response circle completely.

Sample $2 + 4 =$

(A) 2 (B) 6 (C) 8 (D) 9



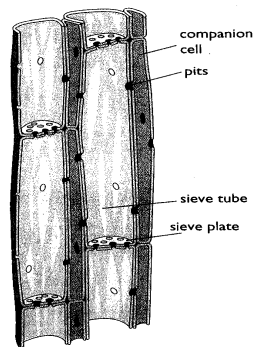
If you think you have made a mistake, put a cross through the incorrect answer and fill in the new answer.

If you change your mind and have crossed out what you consider to be the correct answer, then indicate this by writing the word *correct* and drawing an arrow as follows.

- 1 Kangaroos lick their forelimbs to achieve heat loss through evaporation. This is an example of which of the following?
- (A) homeostasis
 - (B) osmoregulation
 - (C) behavioural adaptation
 - (D) ectothermy
- 2 In which of the following ways is the majority of carbon dioxide carried in human blood?
- (A) hydrogen carbonate ions
 - (B) carbaminohaemoglobin
 - (C) dissolved directly in plasma
 - (D) free gas bubbles
- 3 Which of the following is the process by which nutrients are reabsorbed from the nephron into the surrounding capillaries?
- (A) deamination
 - (B) filtration
 - (C) active transport
 - (D) osmosis
- 4 Insulin is one of the simplest proteins synthesised by the human body. It consists of a polypeptide chain of 51 amino acids. How many bases in a DNA molecule are required in order to code for this protein?
- (A) 51
 - (B) 153
 - (C) 102
 - (D) 26
- 5 Using Snapdragons, homozygous white flowering plants were crossed with homozygous red flowering plants. All of the F1 plants had pink flowers. Possible genotypes for these plants (in named order) would be:
- (A) WR,RR, RR
 - (B) WR,WW,WR
 - (C) WW,RR,RW
 - (D) WR,RW,WW

- 6 Which of the following best describes the chemical composition of an enzyme?
- (A) polypeptide
 - (B) protein
 - (C) nucleic acid
 - (D) triglyceride
- 7 Which of the following best describes the effect of very cold temperatures on the structure or activity of an enzyme?
- (A) The enzyme structure is denatured.
 - (B) The enzyme activity increases.
 - (C) The enzyme activity is temporarily inhibited.
 - (D) The enzyme structure is temporarily altered.
- 8 When frog DNA was analysed 26% of the bases were cytosine. What would be the expected percentage of adenine?
- (A) 24%
 - (B) 26%
 - (C) 48%
 - (D) 52%
- 9 Human skin adapts to exposure to UV radiation by producing more melanin and becoming suntanned. How can this observation be explained?
- (A) The environment is affecting phenotype.
 - (B) The environment is affecting genotype.
 - (C) The environment affects the rate of meiosis in skin cells.
 - (D) The environment is acting as a selection agent.
- 10 Which of the following is the best definition of *enantiostasis*?
- (A) The maintenance of metabolic functions in response to environmental change.
 - (B) The maintenance of physiological functions in response to environmental change.
 - (C) The maintenance of a healthy organism in response to environmental variation.
 - (D) The maintenance of metabolic and physiological functions in response to variations in the environment.

- 11 Which of the following is **not** a response shown by some plants to an increase in the ambient (surrounding) temperature?
- (A) increased transpiration
 (B) decreased translocation
 (C) closing of the stomates
 (D) loss of leaves
- 12 The following diagram represents part of a plant. Which of the following correctly identifies the tissue drawn?



- (A) xylem
 (B) phloem
 (C) epidermis
 (D) cambium
- 13 Below is a drawing of a section from an Australian plant. Which of the following correctly identifies the adaptation shown by this plant to minimise water loss?



- (A) Reduced surface area
 (B) Small leaves
 (C) Fleshy leaves
 (D) No leaves stem used for photosynthesis.

- 14** Which the following processes could be used to produce a transgenic organism?
- (A) artificial insemination
 - (B) artificial pollination
 - (C) whole organism cloning
 - (D) plasmid vectors
- 15** How would the genetic diversity of a agricultural food crop be affected by the introduction and extensive use of cloning?
- (A) The genetic diversity would be increased.
 - (B) The genetic diversity would be decreased.
 - (C) The genetic diversity would be unchanged over time.
 - (D) The genetic diversity would increase at first and then decrease.

Part B

Total marks: 60

Attempt Questions 16 to 28

Allow about 1 hour 45 minutes for this Part

--

Class

--	--	--	--	--	--	--	--	--	--

Candidate Number

Answer the questions in the spaces provided.
Show all relevant working in questions involving calculations.

Marks

Question 16 (5 marks)

Homeostasis can be said to consist of two stages:

5

- detecting changes from the stable state.
- counteracting changes from the stable state.

Discuss this statement with reference to a named example.

.....

.....

.....

.....

.....

.....

.....

.....

.....

.....

.....

.....

.....

.....

.....

.....

.....

.....

.....

.....

.....

.....

.....

--

Class

--	--	--	--	--	--	--	--	--	--

Candidate Number

Marks

Question 17 (3 marks)

Describe three processes involved in the production and maintenance of the transpiration stream in flowering plants.

3

.....

.....

.....

.....

.....

.....

--

Class

--	--	--	--	--	--	--	--	--	--

Candidate Number

Marks

Question 18 (4 marks)

In calico cats, the allele X^B produces black fur colour and the allele X^L produces yellow fur. These alleles show co-dominance and the hybrid form produces tortoiseshell fur colour. The genes are sex-linked.

A black female cat was mated with a yellow male cat and several offspring were produced. State the genotypes of the parents and the phenotypes (including sex) of all possible offspring. Show your working.

4

.....

.....

.....

.....

.....

.....

.....

.....

.....

.....

--

Class

--	--	--	--	--	--	--	--	--	--

Candidate Number

Marks

Question 19 (6 marks)

Compare the structure of arteries and veins in relation to how blood is moved through them.

6

.....

.....

.....

.....

.....

.....

.....

.....

.....

.....

.....

.....

.....

.....

.....

--

Class

--	--	--	--	--	--	--	--	--	--

Candidate Number

BLANK PAGE

--

Class

--	--	--	--	--	--	--	--	--	--

Candidate Number

Marks

Question 21 (4 marks)

Outline the need for oxygen in living cells and explain the adaptive advantage of haemoglobin in the circulatory system of a mammal.

4

.....

.....

.....

.....

.....

.....

.....

.....

.....

.....

--

Class

--	--	--	--	--	--	--	--	--	--

Candidate Number

Marks

Question 22 (2 marks)

Explain why the removal of carbon dioxide from the cells of an organism is essential for its survival.

2

.....

.....

.....

.....

.....

.....

.....

--

Class

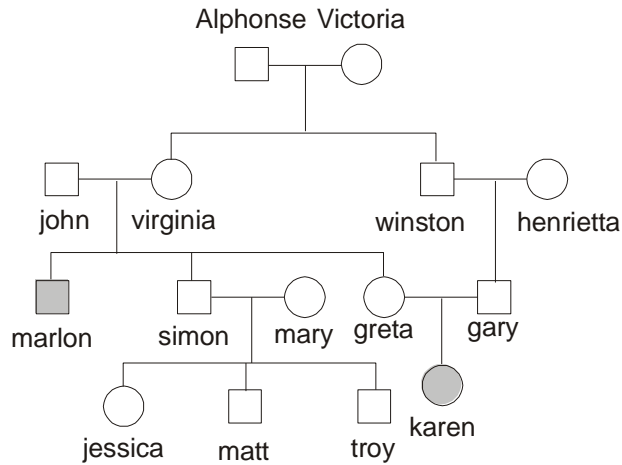
--	--	--	--	--	--	--	--	--	--

Candidate Number

Marks

Question 23 (5 marks)

Study the human pedigree for the inheritance of the disease *phenylketonuria* (PKU).



(a) Using the symbols N = normal and n = PKU, state the genotypes of: 2

(i) John

.....

(ii) Marlon

.....

(b) Explain why the mutation causing this disease probably occurred in either Alphonse or Victoria rather than in a later generation. 2

.....

.....

.....

.....

Question 23 continues on page 16

--

Class

--	--	--	--	--	--	--	--	--	--

Candidate Number

Marks

Question 23 (continued)

- (c) State the probability of a second child of Greta and Gary inheriting the allele. (*show working*) **1**

.....

.....

Question 24 (4 marks)

There are many theories to explain the considerable diversity of life on Earth.

In an experiment on the effects of an insecticide on flea infestations of a domestic dog, it was found that after the first two treatments the insecticide was effective. However, after some months, a third treatment was less effective and many fleas remained alive. **4**

Give a reasoned scientific explanation for these observations.

.....

.....

.....

.....

.....

.....

.....

.....

.....

.....

--

Class **Marks**

--	--	--	--	--	--	--	--	--	--

Candidate Number

Question 25 (8 marks)

DNA is a complex molecule found in almost all living organisms.

(a) Use a labelled diagram to illustrate the process of DNA replication. **3**

(b) Name a mutagen. **1**

.....

(c) Draw a simple flow chart to illustrate how changes in DNA structure can result in changes in cell activity. **4**

--

Class

--	--	--	--	--	--	--	--	--	--

Candidate Number

BLANK PAGE

--

Class

--	--	--	--	--	--	--	--	--	--

Candidate Number

Marks

Question 26 (5 marks)

Describe a first-hand investigation that you have performed to demonstrate the effect of changes in temperature on the activity of an enzyme.

5

.....

.....

.....

.....

.....

.....

.....

.....

.....

.....

.....

.....

.....

.....

.....

.....

--

Class

--	--	--	--	--	--	--	--	--	--

Candidate Number

BLANK PAGE

--

Class

--	--	--	--	--	--	--	--	--	--

Candidate Number

Marks

Question 27 (3 marks)

Draw a labelled diagram to illustrate a simple model for the specificity of enzymes to their substrate.

3

--

Class

--	--	--	--	--	--	--	--	--	--

Candidate Number

Marks

Question 28 (7 marks)

Using specific examples, describe how the Theory of Evolution is supported by:

7

- palaeontology
- comparative anatomy
- biogeography

.....

.....

.....

.....

.....

.....

.....

.....

.....

.....

.....

.....

.....

.....

.....

.....

Section II**Total marks: 25****Attempt ONE question from Questions 29 - 33****Allow about 45 minutes for this section**

Answer the question in a writing booklet. Extra writing booklets are available.

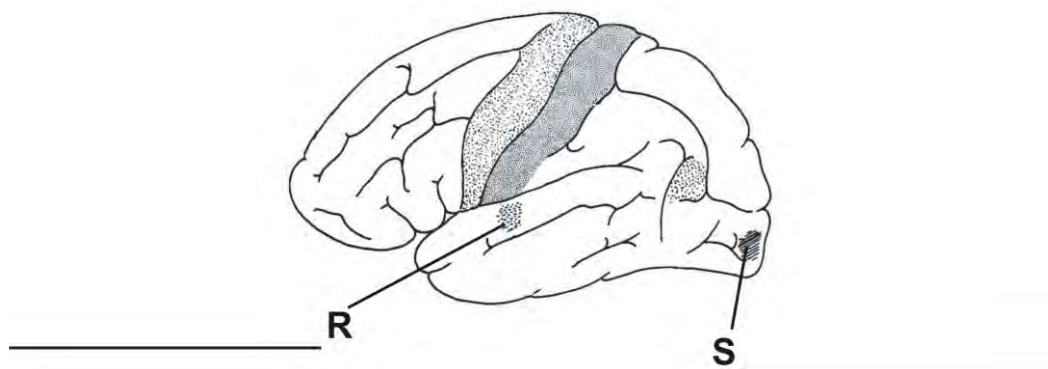
	PAGES
Question 29	Communication22
Question 30	Biotechnology
Question 31	Genetics - The Code Broken?23
Question 32	The Human Story
Question 33	Biochemistry

BLANK PAGE

Class									
Candidate Number									

Marks**Question 29 – Communication (25 marks)**

- (a) (i) Where is the vitreous humour located in the eye? You may draw a labelled sketch of the eye if you wish. **1**
- (ii) On the diagram of the brain below state the functions of the areas labelled R and S. **2**



- (b) (i) How would you gather information on the wavelengths of the electromagnetic spectrum which can be detected by animals other than humans? In your answer explain how you would assess the reliability of the information that you had collected. **2**
- (ii) Draw a detailed diagram to show how the lens of the eye refracts light onto the fovea. **2**
- (c) Outline the structure of the human larynx and the associated structures that assist the production of intelligible sounds. In your answer explain how each structure helps to produce the sounds. **5**
- (d) Describe one technology which is used to help a named visual impairment and one technology which is used to overcome a named auditory impairment. In your answer you should clearly explain the defect, how it affects the sufferer and how the technology helps to overcome the defect. **6**
- (e) Explain the role of the photoreceptors in vision. **7**

--

Class

--	--	--	--	--	--	--	--	--	--

Candidate Number

BLANK PAGE

SYDNEY GRAMMAR SCHOOL



2003
FORM VI
HSC TRIAL EXAMINATION

Biology

CRIB

General Instructions

- Working time – 3 hours
- Board-approved calculators may be used
- Write using blue or black pen
- Draw diagrams using pencil
- Write your Candidate Number at the top of each page of Part B

Section I Pages 2 - 20

Total marks: 75

This section has two parts, Part A and Part B

Part A

Total marks: 15

- Attempt Questions 1 to 15
- Allow about 25 minutes for this Part

Part B

Total marks: 60

- Attempt Questions 16 to 28
- Allow about 1 hour 45 minutes for this Part

Section II Pages 21 - 23

Total marks: 25

- Attempt ONE Question from Option Questions
- Allow about 45 minutes for this Section

CHECKLIST

Each boy should have the following:

1 Question Paper	
1 Multiple-choice Answer Sheet	
1 4-page Writing Booklet	

Part A

Total marks: 15

Attempt Questions 1 to 15

Allow about 25 minutes for this Part

- 1 C
- 2 A
- 3 C
- 4 B
- 5 C
- 6 B
- 7 C
- 8 A
- 9 A
- 10 D
- 11 B
- 12 B
- 13 A
- 14 D
- 15 B

Part B**Total marks: 60****Attempt Questions 16 to 28****Allow about 1 hour 45 minutes for this Part**

Class									
Candidate Number									

Answer the questions in the spaces provided.
Show all relevant working in questions involving calculations.

Marks**Question 16** (5 marks)

Homeostasis can be said to consist of two stages:

5

- detecting changes from the stable state.
- counteracting changes from the stable state.

Discuss this statement with reference to a named example.

DEFINITION OF HOMEOSTASIS: THE MAINTENANCE OF A CONSTANT (WITHIN FINE LIMITS) OF A CONSTANT INTERNAL ENVIRONMENT (1 MARK)

USING A NAMED EXAMPLE: RECEPTOR DETECTS EXTERNAL CHANGE (VIA STIMULI) AND SENDS INFORMATION VIA NERVOUS SYSTEM TO A CONTROL CENTRE (1 MARK).

FOR TEMPERATURE THIS IS THE HYPOTHALAMUS (NOTE SPELLING!). (1 MARK)

THE CONTROL CENTRE SENDS A MESSAGE TO AN EFFECTOR TO PROMOTE A RESPONSE (1 MARK).

NEGATIVE FEEDBACK OPERATES TO NULLIFY THE RESPONSE VIA THE RECEPTOR, CONTROL CENTRE, EFFECTOR (1 MARK)

Class									
Candidate Number									

Marks**Question 17** (3 marks)

Describe three processes involved in the production and maintenance of the transpiration stream in flowering plants.

3

DESCRIPTIONS OF ANY 3 PROCESSES ARE REQUIRED - **NOT JUST NAMES**. (NO MARKS)

1. OSMOSIS: MOVEMENT OF WATER MOLECULES FROM A HIGH CONC. TO A LOW CONC. THROUGH A SELECTIVELY PERMEABLE MEMBRANE - FROM SOIL TO ROOT (1)
2. COHESION: ATTRACTION OF LIKE-MOLECULES E.G. WATER MOLECULES TO MAINTAIN A CONTINUOUS CHAIN OF MOLECULES (UNDER TENSION) (1)
3. ADHESION: ATTRACTION OF UNLIKE MOLECULES - WATER MOLECULES TO XYLEM TO PREVENT WATER MOLECULES MOVING BACK DOWN THE XYLEM
4. TRANSPIRATION: THE EVAPORATION OF WATER MOLECULES FROM STOMATA CAUSES A PULLING FORCE TO BE EXERTED ON WATER MOLECULES. THEREFORE, THE CHAIN OF WATER MOLECULES IS PULLED UP THE XYLEM
5. ROOT PRESSURE: PRESSURE OF WATER ENTERING XYLEM AT ROOT CAUSES A POSITIVE PRESSURE WHICH CAN PUSH THE WATER MOLECULES A SHORT DISTANCE UP THE XYLEM.

--

Class

--	--	--	--	--	--	--	--	--	--

Candidate Number

Marks

Question 18 (4 marks)

In calico cats, the allele X^B produces black fur colour and the allele X^L produces yellow fur. These alleles show co-dominance and the hybrid form produces tortoiseshell fur colour. The genes are sex-linked.

A black female cat was mated with a yellow male cat and several offspring were produced. State the genotypes of the parents and the phenotypes (including sex) of all possible offspring. Show your working.

4

$X^B X^B$	x	$X^L Y$	(1 mark)	
$X^B X^L$	$X^B Y$	$X^B X^L$	$X^B Y$	(1 mark)
plus 1 mark for working/Punnett Sq				
FT	MB	FT	MB	(1 mark)

Class									
Candidate Number									

Marks**Question 19** (6 marks)

Compare the structure of arteries and veins in relation to how blood is moved through them.

6

MUST MAKE SIMILARITIES (OFTEN OMITTED) AS WELL AS DIFFERENCES:

BOTH HAVE A CENTRAL LUMEN THROUGH WHICH BLOOD CAN FLOW (1)

ARTERIES HAVE A THICKER, MORE MUSCULAR AND MORE ELASTIC WALL THAN VEINS (2).

ARTERIES HAVE THESE FEATURES TO COPE WITH BLOOD UNDER VERY HIGH PRESSURE (1) AND CAN ALSO ASSIST IN EXPANDING AND RECOILING TO ACCOMMODATE PULSE OF BLOOD (1).

VEINS HAVE A THINNER WALL (BUT ARE NOT SMALLER IN DIAMETER), WITH LESS MUSCLE AND LESS ELASTIC TISSUE BECAUSE BLOOD IS UNDER LOWER PRESSURE (1). OR

VALVES ARE PRESENT TO PREVENT BACK-FLOW OF BLOOD IN VEINS. BLOOD MOVEMENT IS ASSISTED BY SKELETAL MUSCLE TO PUSH BLOOD FORWARDS,

--

Class

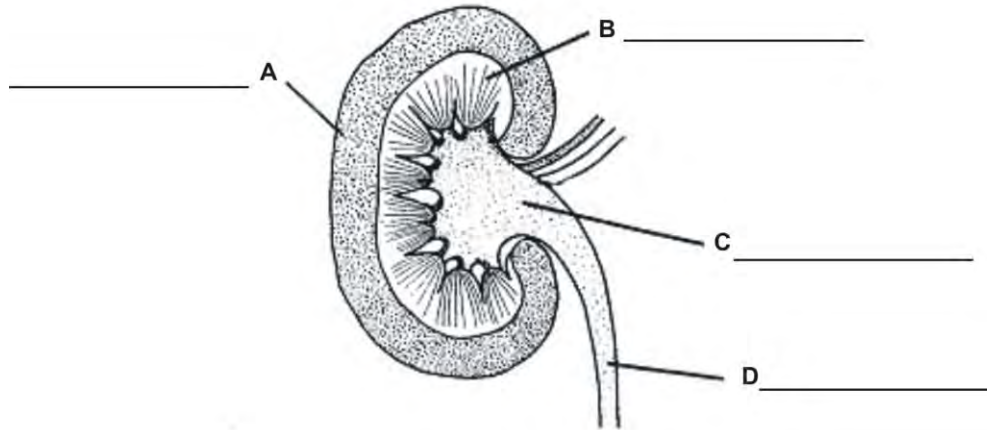
--	--	--	--	--	--	--	--	--	--

Candidate Number

Marks

Question 20 (4 marks)

- (a) Identify the parts labelled A, B, C and D on this diagram of the internal structure of a human kidney. 2



- (b) Identify the main function of: 2

- (i) part A

FILTRATION = 1 MARK

- (ii) part B

RE-ABSORPTION = 1 MARK

<div style="border: 1px solid black; width: 100%; height: 20px; margin-bottom: 5px;"></div> Class									
Candidate Number									

Marks**Question 21** (4 marks)

Outline the need for oxygen in living cells and explain the adaptive advantage of haemoglobin in the circulatory system of a mammal.

4

INDICATION THAT OXYGEN IS REQUIRED FOR EFFICIENT RESPIRATION (IE EQUATION)

1

RESPIRATION **LIBERATES ENERGY** (IN THE FORM OF ATP) WHICH CAN BE USED TO DRIVE METABOLISM. (NB NO MARKS FOR SIMPLY SAYING OXYGEN IS NEEDED FOR METABOLISM)

1

HAEMOGLOBIN CAN "FIX" O₂ MAKING IT 100X MORE SOLUBLE THAN IN PLASMA

1

THIS ALLOWS LARGE QUANTITIES OF O₂ TO BE DELIVERED TO TISSUES FAR FROM THE SITE OF O₂ ABSORPTION AND THEREFORE ALLOWS FOR

-THE EVOLUTION OF LARGER AND MORE COMPLEX ORGANISMS.

-FASTER/MORE EFFICIENT METABOLISM ETC

1

Class									
Candidate Number									

Marks**Question 22** (2 marks)

Explain why the removal of carbon dioxide from the cells of an organism is essential for its survival.

2

CO₂ WHEN DISSOLVED IN THE CYTOPLASM WILL FORM H₂CO₃ .

1

THIS IS ACIDIC AND WILL HAVE A DETRIMENTAL EFFECT ON THE EFFICIENCY OF ENZYMES WHICH OPERATE OPTIMALLY AT A SPECIFIC PH.

1

(MUST TALK ABOUT EFFECT OF CO₂ ON CELLS)

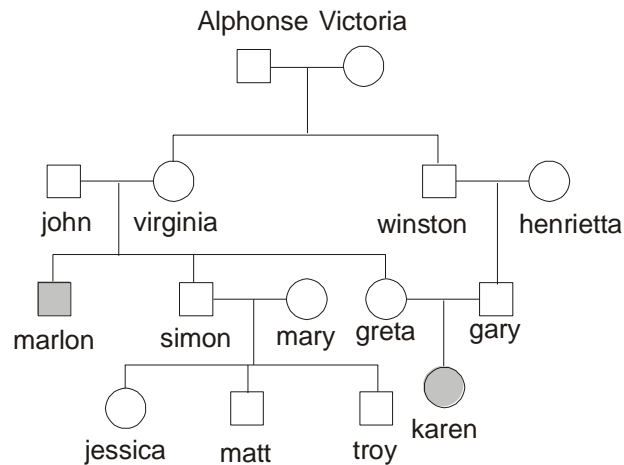
Class									

Candidate Number

Marks

Question 23 (5 marks)

Study the human pedigree for the inheritance of the disease *phenylketonuria* (PKU).



(a) Using the symbols N = normal and n = PKU, state the genotypes of: 2

(i) John

Nn 1

(ii) Marlon

nn 1

(b) Explain why the mutation causing this disease probably occurred in either Alphonse or Victoria rather than in a later generation. 2

IT IS VERY UNLIKELY THAT THE MUTATION SPONTANEOUSLY OCCURRED TWICE (IE IN VIRGINIA AND WINSTON OR HENRIETTA OR GARY) 1

ALPHONSE AND VICTORIA ARE THE COMMON ANCESTORS OF ONE OF MARLON'S PARENTS AND **BOTH** OF KAREN'S PARENTS **OR** DESCENDENTS OF BOTH OF ALPHONSE'S AND VICTORIA'S CHILDREN HAD PKU 1

<div style="border: 1px solid black; width: 150px; height: 20px; margin: 0 auto;"></div> Class									

Candidate Number

Marks

Question 23 (continued)

- (c) State the probability of a second child of Greta and Gary inheriting the allele. (*show working*) **1**

75%

Question 24 (4 marks)

There are many theories to explain the considerable diversity of life on Earth.

- In an experiment on the effects of an insecticide on flea infestations of a domestic dog, it was found that after the first two treatments the insecticide was effective. However, after some months, a third treatment was less effective and many fleas remained alive. **4**

Give a reasoned scientific explanation for these observations.

THE INSECTICIDE IS ACTING AS A SELECTIVE AGENT

1

INITIALLY THE INSECTICIDE KILLED MOST OF THE FLEAS

1

HOWEVER, SOME FLEAS WERE IMMUNE TO ITS EFFECTS **1**

THESE THEN BRED AND SOON BECAME THE DOMINANT FORM (MOST NUMEROUS), RENDERING THE INSECTICIDE INEFFECTIVE.

1

Class									
Candidate Number									

Marks**Question 25** (8 marks)

DNA is a complex molecule found in almost all living organisms.

- (a) Use a labelled diagram to illustrate the process of DNA replication. **3**

MARKS AWARDED FOR -

UNZIPS (AND UNWINDS) **1**

FREE NUCLEOTIDES PAIRING WITH SINGLE STRANDS
1

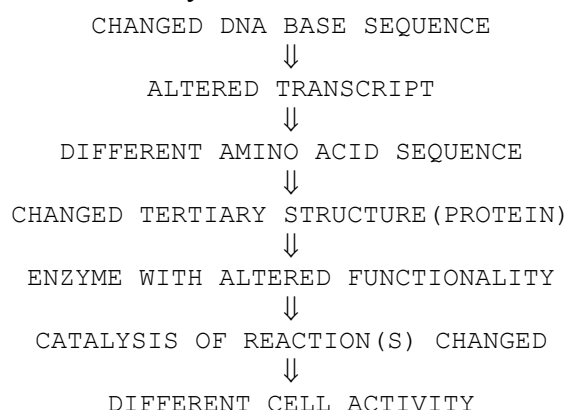
NEW DOUBLE STRANDS FORMING (BEHIND NUCLEOTIDE
ATTACHMENT SITE OF UNZIPPING HELIX) **1**

NB MANY STUDENTS DID NOT ILLUSTRATE THE PROCESS,
INSTEAD SIMPLY DRAWING THE END RESULTS.

- (b) Name a mutagen. **1**

RADIATION, NAMED CHEMICAL, BIOLOGICAL AGENT.

- (c) Draw a simple flow chart to illustrate how changes in DNA structure can result in changes in cell activity. **4**



5 OR 6 CLEAR STEPS - **4** MARKS

4 CLEAR STEPS - **3** MARKS

3 CLEAR STEPS - **2** MARKS

2 CLEAR STEPS - **1** MARK

NB - IT IS CLEAR THAT MANY STUDENTS HAVE NO IDEA WHAT A FLOW
CHART IT. IT IS EQUALLY CLEAR THAT THE REST HAVE A VERY
LIMITED UNDERSTANDING OF THE RELATIONSHIP BETWEEN DNA
STRUCTURE AND CELL ACTIVITY.

Class									
Candidate Number									

Marks**Question 26** (5 marks)

Describe a first-hand investigation that you have performed to demonstrate the effect of changes in temperature on the activity of an enzyme.

5

1 MARK FOR NAMING THE ENZYME AND THE SUBSTRATE

1 MARK FOR STATING 2 DIFFERENT TEMPERATURES

1 MARK FOR KEEPING ALL OTHER FACTORS CONSTANT

1 MARK FOR A REASONABLE RESULT

1 MARK FOR A METHOD THAT WOULD WORK

--

Class

--	--	--	--	--	--	--	--	--	--

Candidate Number

Marks

Question 27 (3 marks)

Draw a labelled diagram to illustrate a simple model for the specificity of enzymes to their substrate.

3

1 MARK FOR SUBSTRATE AND ENZYME CORRECTLY LABELLED

1 MARK FOR CORRECT SHAPE & MATCH-UP

1 MARK FOR LOCATING AND IDENTIFYING ACTIVE SITE

<div style="border: 1px solid black; width: 150px; height: 20px; margin: 0 auto;"></div> Class										
Candidate Number										

Marks**Question 28** (7 marks)

Using specific examples, describe how the Theory of Evolution is supported by:

7

- palaeontology
- comparative anatomy
- biogeography

THE THEORY OF EVOLUTION STATES THAT PRESENT-DAY ORGANISMS CAME FROM PRE-EXISTING COMMON ANCESTORS WHICH CHANGED OVER LONG PERIODS OF TIME.

(1 MARK)

PALAEONTOLOGY IS THE SCIENTIFIC STUDY OF FOSSILS AND ALL ASPECTS OF EXTINCT LIFE. THE FOSSIL RECORD, PRESERVED IN LAYERS OF SEDIMENTARY ROCK (OF KNOWN AGE), PROVIDES CLEAR EVIDENCE OF CHANGES FROM SIMPLE ORGANISMS TO MORE COMPLEX ORGANISMS. EXAMPLE: ARCHAEOPTERYX FOSSILS SUGGEST TRANSITIONAL FORMS

(2 MARKS)

COMPARATIVE ANATOMY SHOWS SIMILAR STRUCTURES IN DIFFERENT ORGANISMS. THESE HOMOLOGOUS STRUCTURES SUGGEST A COMMON ANCESTRY WITH CHANGES DUE TO ADAPTATION TO SPECIFIC FUNCTION. EXAMPLE: THE PENTADACTYL LIMB OF MANY VERTEBRATES SHOWS SIMILAR BASIC STRUCTURE MODIFIED FOR SPECIALIZED FUNCTIONS, SUGGESTING COMMON ANCESTRY

(2 MARKS)

BIOGEOGRAPHY REFERS TO THE GEOGRAPHICAL DISTRIBUTION OF BOTH LIVING AND FOSSIL ORGANISMS. THE DISTINCTIVE AND SOMETIMES UNIQUE FAUNA AND FLORA FOUND ON VARIOUS ISLANDS AND CONTINENTS SUPPORTS THE THEORY THAT THESE ORGANISMS EVOLVED FROM ANCESTRAL SPECIES WITHIN THAT GEOGRAPHIC REGION (FURTHER SUPPORTED BY PLATE TECTONICS/CONTINENTAL DRIFT) EXAMPLE: FLIGHTLESS BIRDS FOUND ON QUITE SEPARATE AND DISTANT CONTINENTS

(2 MARKS)

Note: Biogeography not well understood; several boys incorrectly used convergent evolution as an example

Section II

Total marks: 25

Attempt ONE question from Questions 29 - 33

Allow about 45 minutes for this section

Answer the question in a writing booklet. Extra writing booklets are available.

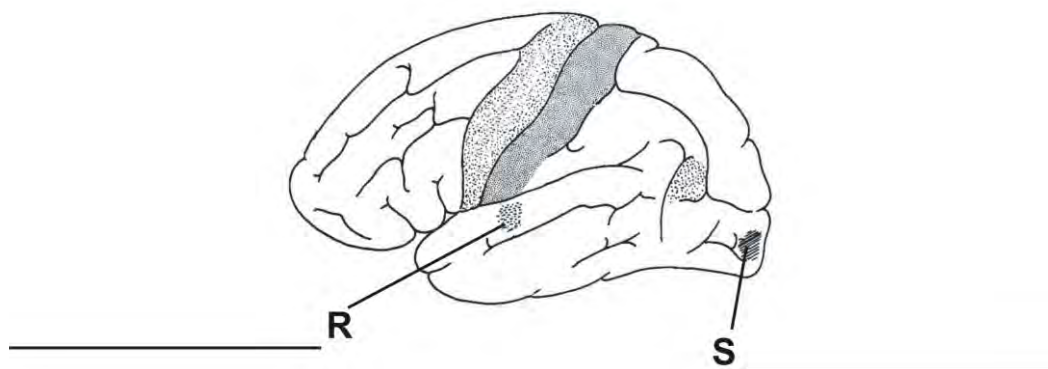
Class									
Candidate Number									

		PAGES
Question 29	Communication	22
Question 30	Biotechnology	
Question 31	Genetics - The Code Broken?	23
Question 32	The Human Story	
Question 33	Biochemistry	

Class									
Candidate Number									

Marks**Question 29 – Communication (25 marks)**

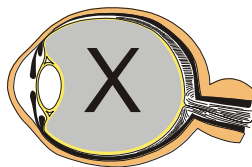
- (a) (i) Where is the vitreous humour located in the eye? You may draw a labelled sketch of the eye if you wish. **1**
- (ii) On the diagram of the brain below state the functions of the areas labelled R and S. **2**



- (b) (i) How would you gather information on the wavelengths of the electromagnetic spectrum which can be detected by animals other than humans? In your answer explain how you would assess the reliability of the information that you had collected. **2**
- (ii) Draw a detailed diagram to show how the lens of the eye refracts light onto the fovea. **2**
- (c) Outline the structure of the human larynx and the associated structures that assist the production of intelligible sounds. In your answer explain how each structure helps to produce the sounds. **5**
- (d) Describe one technology which is used to help a named visual impairment and one technology which is used to overcome a named auditory impairment. In your answer you should clearly explain the defect, how it affects the sufferer and how the technology helps to overcome the defect. **6**
- (e) Explain the role of the photoreceptors in vision. **7**

Q 29 - COMMUNICATIONS OPTION CRIB

(a) (i) BETWEEN THE LENS AND THE RETINA



(ii) R - sound
S - vision

(b) (i) 1 mark - REASONABLE SOURCES SUCH AS THE INTERNET, JOURNALS & BOOKS - MUST NAME 2

1 mark - SOURCE - i.e. UNI ETC
DATA - i.e. RECENT

(ii) 1 mark FOR SHOWING LIGHT RAYS REFRACTED BY LENS
1 mark FOR CORRECT DRAWING i.e. FOCUS ON RETINA

(c) 2 marks - ACCURATE DESCRIPTION OF LARYNX, 2 STRUCTURES WELL DEFINED

1 mark - HOW IT WORKS
OR

1 mark - FOR GOOD DESCRIPTION OF CARDS
1 mark - FOR HIGH / LOW PITCH
1 mark - FOR VOLUME

2 marks - FOR STRUCTURE RELATING TO FUNCTION OF 2 OTHER STRUCTURES. ONE MUST BE THE LUNGS.

(d) 3 marks - VISION	3 marks - HEARING
1 mark - DESCRIPTION	1 mark - DESCRIPTION
1 mark - TECHNOLOGY	1 mark - TECHNOLOGY
1 mark - EXPLANATION	1 mark - EXPLANATION

(e) ESSENTIAL INFORMATION

1 mark - RODS AND CONES IN RETINA → VISUAL CORTEX OF THE BRAIN

1 mark - CONTAIN LIGHT SENSITIVE PIGMENTS e.g. RHODOPSIN

1 mark - FOR DISTRIBUTION OF EACH TYPE OF CELL

1 mark - FOR NERVOUS ATTACHMENT OF EACH CELL TYPE

1 mark - FOR FUNCTION OF RODS

1 mark - FUNCTION OF CONES - TRICHROMATIC VISION

1 mark - FOR VISUAL ACUITY AND CONES

Q31 - GENETICS OPTION CRIB

(a) (i) X = phosphate Y = sugar (1 mark
for both)

(ii) UCG GCU (also accept AGC GCU) (2
marks)

(b) Yes, it is possible (0
marks)

if mother is heterozygous A ($I^A i$) & father is
heterozygous B ($I^B i$),

then children can be A ($I^A i$), B ($I^B i$), AB ($I^A I^B$) or O
(ii)

(Punnett Square should used) (2
marks)

(c) Homeotic genes discovered in fruit flies - all
contain homeobox (similar regions);

homeobox genes were then found in mice (now called
Hox genes); then found in many other multicellular
organisms. These genes have similar structure and
function.

also accept: evidence from mutations causing limb
development in wrong parts of body
(2 marks)

(d) Statement defining/explaining **independent vs linked
inheritance** (1 mark)

If the alleles for colour and height are
independently inherited:

F1: GgTt X GgTt

F2: 9 green/tall : 3 green/short : 3 yellow/tall :
1 yellow/short (1 mark)

If the alleles for colour and height are **linked:**

F1: GT/gt X GT/gt

F2: 3 green/tall : 1 yellow/short
(1 mark)

working or Punnett Squares for each
(2 marks)

(e) genetic information contributes to human health by determining many aspects of metabolism and physiology (1 mark)

mutations are changes to the genetic code which alter metabolism (1 mark)

specific named example of genetic disease (1 mark)

accurate description and explanation of effect of mutation (3 marks)

(f) gene cloning produces copies of a single gene; whole-organism cloning produces copies of the entire genome of the organism (2 marks)

processes: gene cloning - by recombinant DNA using bacteria, etc (1 mark)
whole organism - by nuclear transfer , etc (1 mark)

benefits: gene cloning - production of useful products (insulin, gene probes, etc)
whole organism - production of commercially desirable agricultural products (2 marks)

extra depth of knowledge, general introduction or extra details (1 mark)